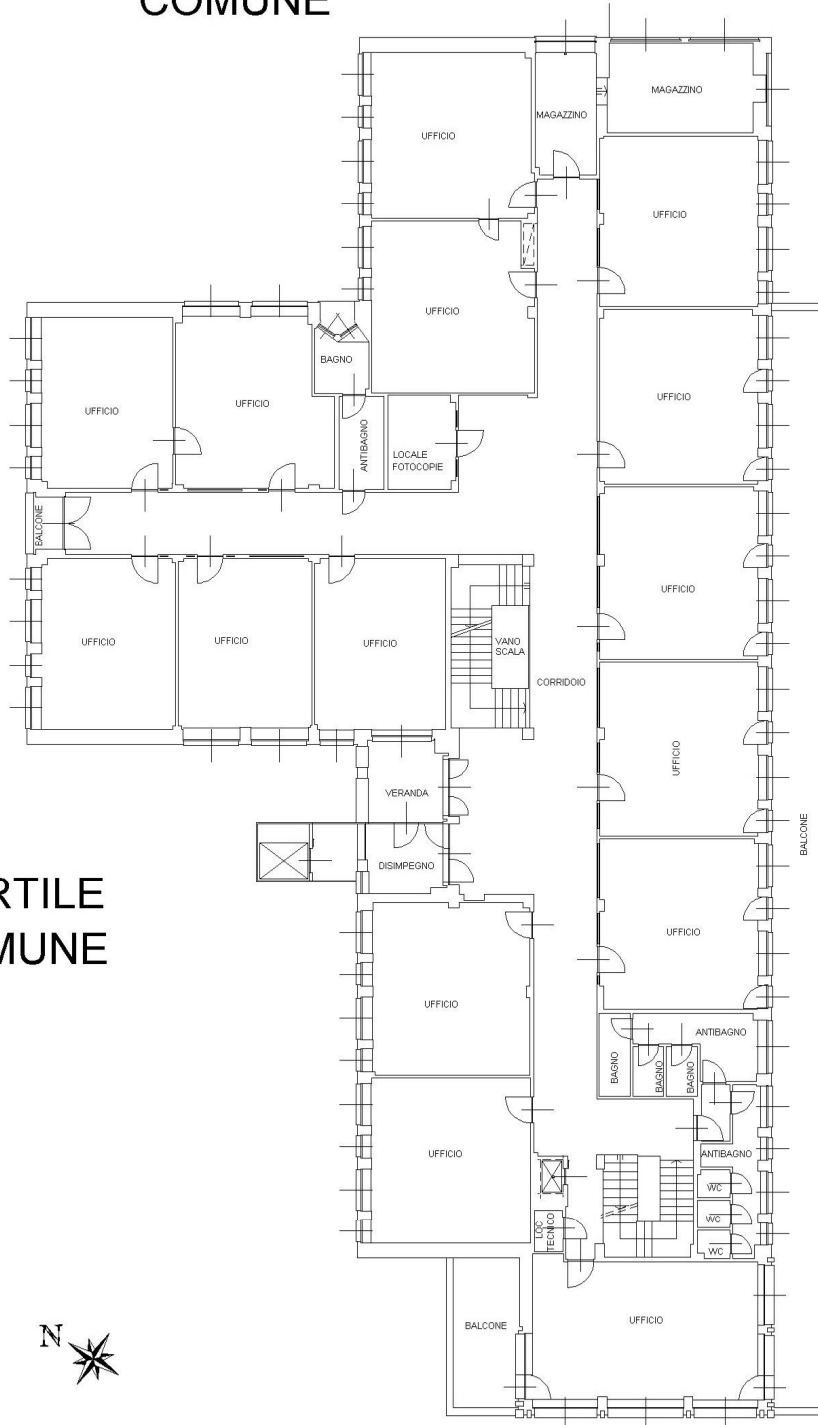


PIANO PRIMO

H media = 3.10 m.

CORTILE
COMUNE



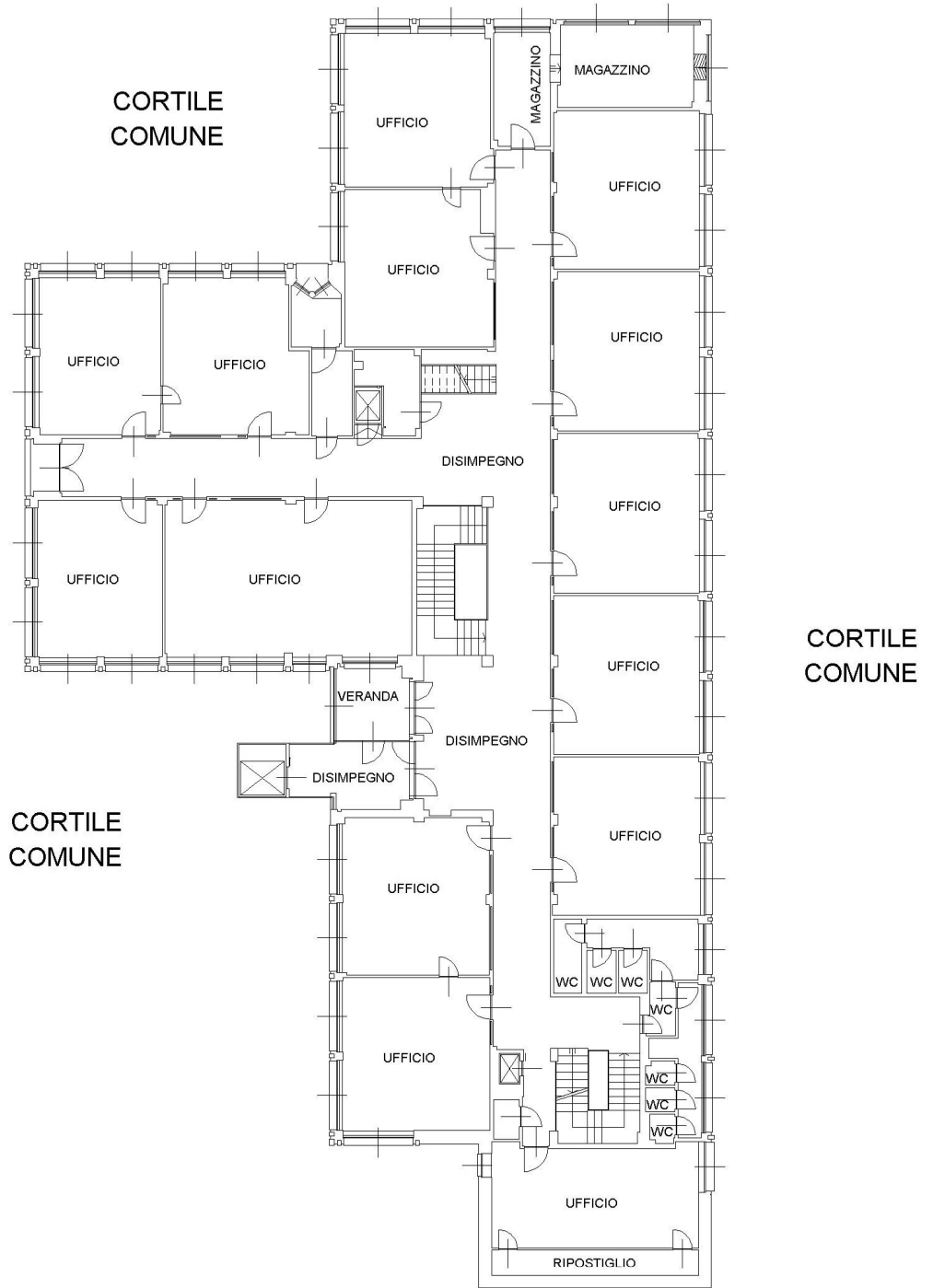
CORTILE
COMUNE

CORTILE
COMUNE

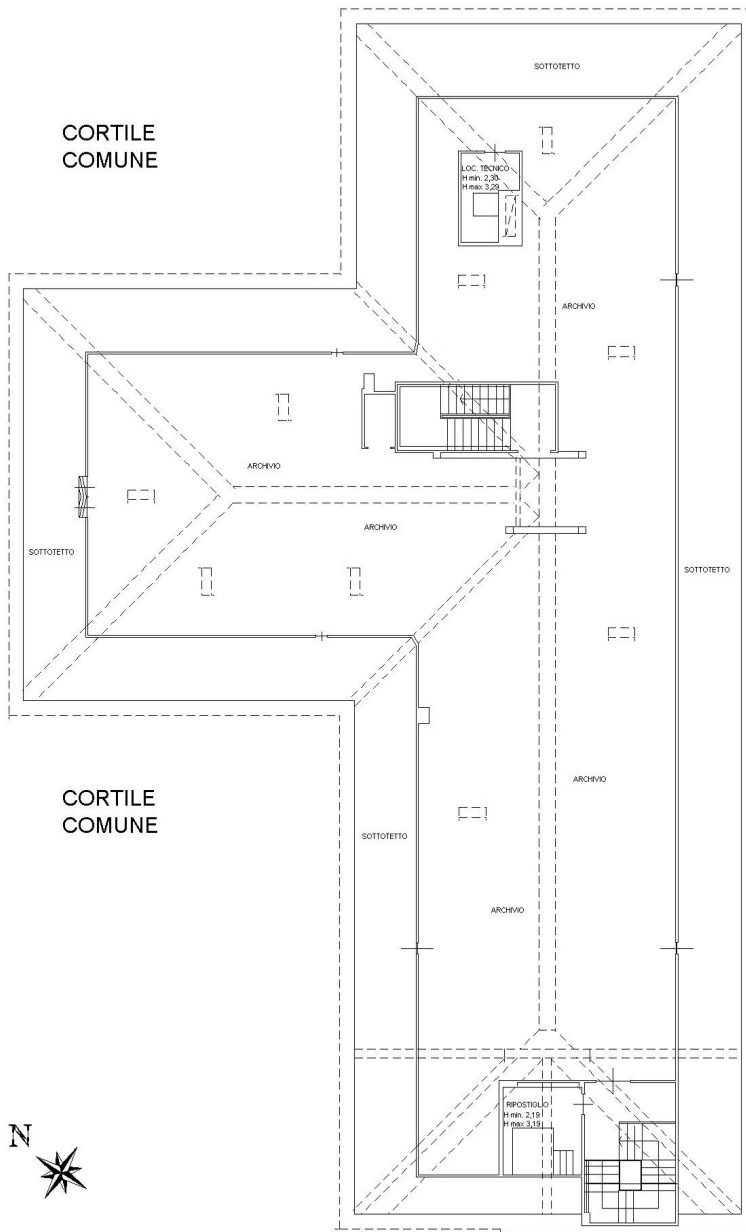
CORTILE
COMUNE

PIANTA PIANO SECONDO

H media = 3.06 m.

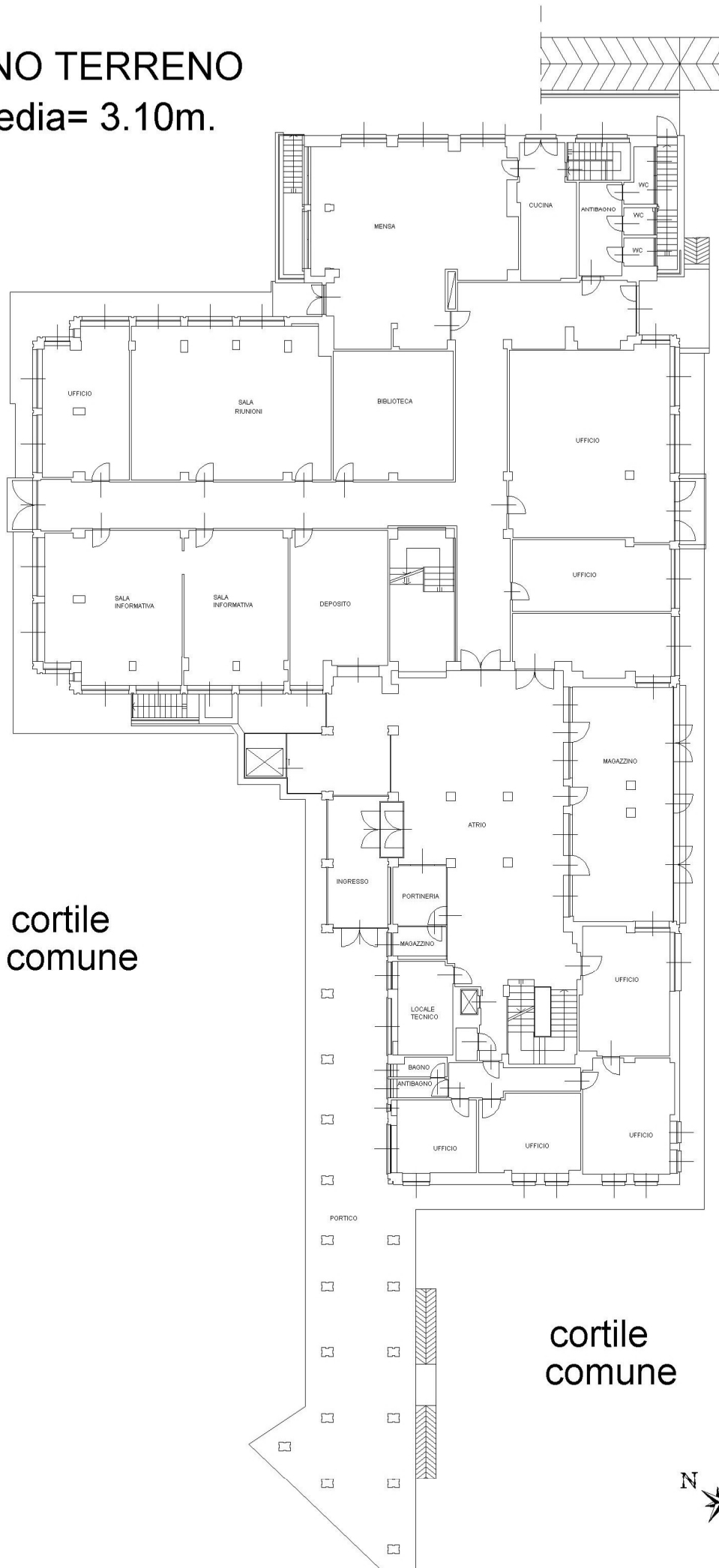


PIANTA PIANO TERZO
H min. 0,90 H max 3,30



PIANO TERRENO

H media= 3.10m.



PIANO INTERRATO

H media= 3.50m.

